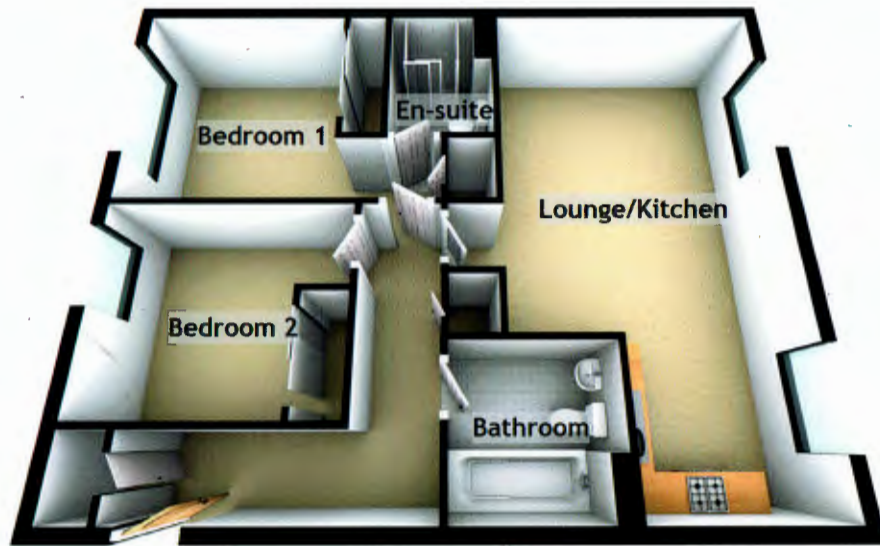


THE SPECIFICATIONS



Approximate Dimensions
(Taken from the widest point)

Lounge/Kitchen	7.52m (24'8") x 4.06m (13'4")
Bedroom 1	4.48m (14'8") x 3.27m (10'9")
En-suite	2.18m (7'2") x 1.61m (5'3")
Bedroom 2	3.51m (11'6") x 2.97m (9'9")
Bathroom	2.21m (7'3") x 2.19m (7'2")

Gross internal floor area (m²) - 67m²

EPC Rating - C

Extras
(Included in the sale)

Sold fully furnished, including; furniture, blinds, curtains, light fittings, carpets and fitted floor coverings. Please note, other items may be available through separate negotiation.



Image credit: <https://www.onbancostars.co.uk/property/>