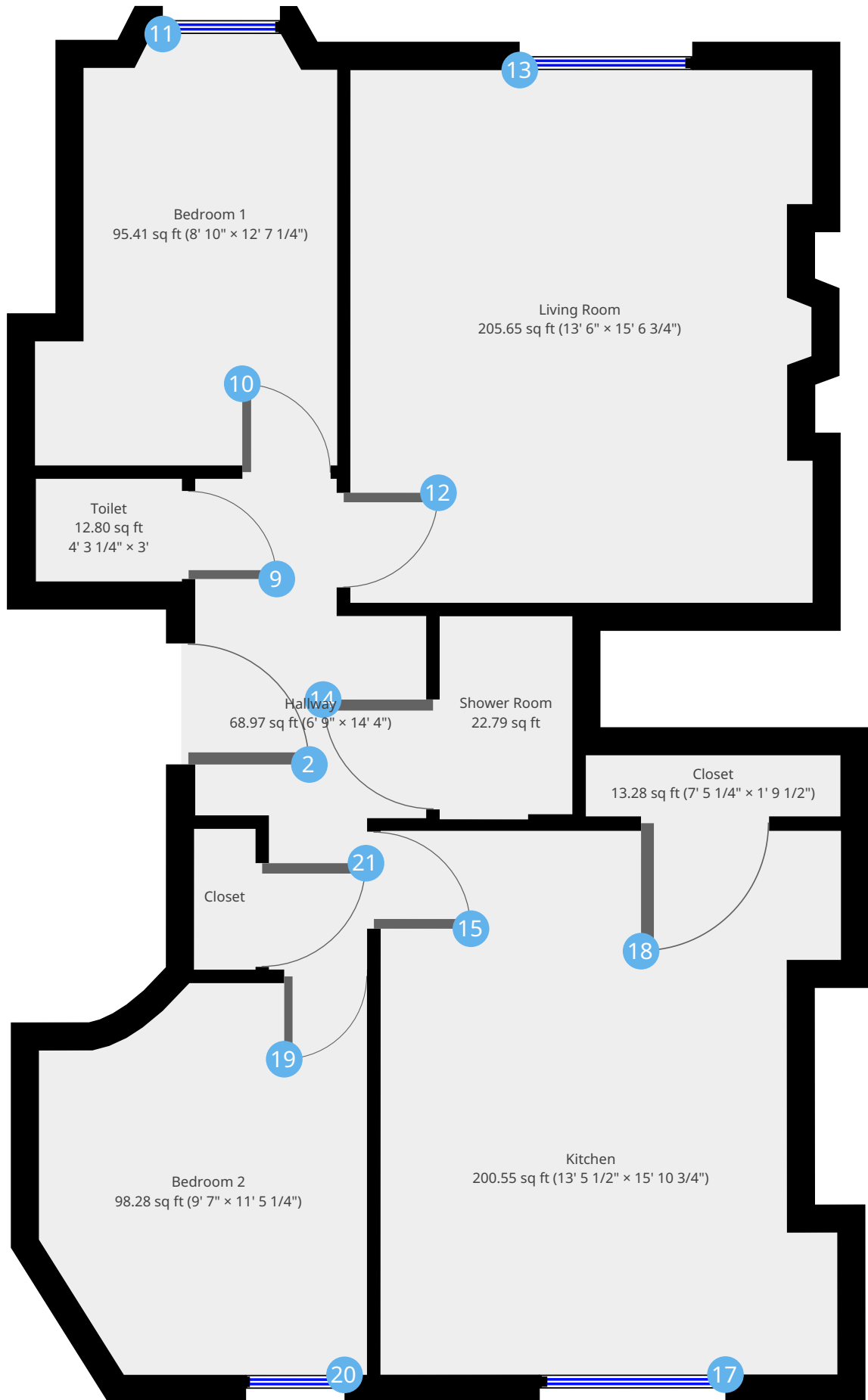


▼ Ground Floor

TOTAL AREA: 724.54 sq ft • LIVING AREA: 717.16 sq ft •



THIS FLOORPLAN IS PROVIDED WITHOUT WARRANTY OF ANY KIND. PINSTRIPE DISCLAIMS ANY WARRANTY INCLUDING, WITHOUT LIMITATION, SATISFACTORY QUALITY OR ACCURACY OF DIMENSIONS. FOR IDENTIFICATION ONLY. NOT TO SCALE.

