

Project 4

SUBMITTED BY

lucy.kosicka@onlineplc.co.uk

CREATED ON

2021-12-03

DETAILS

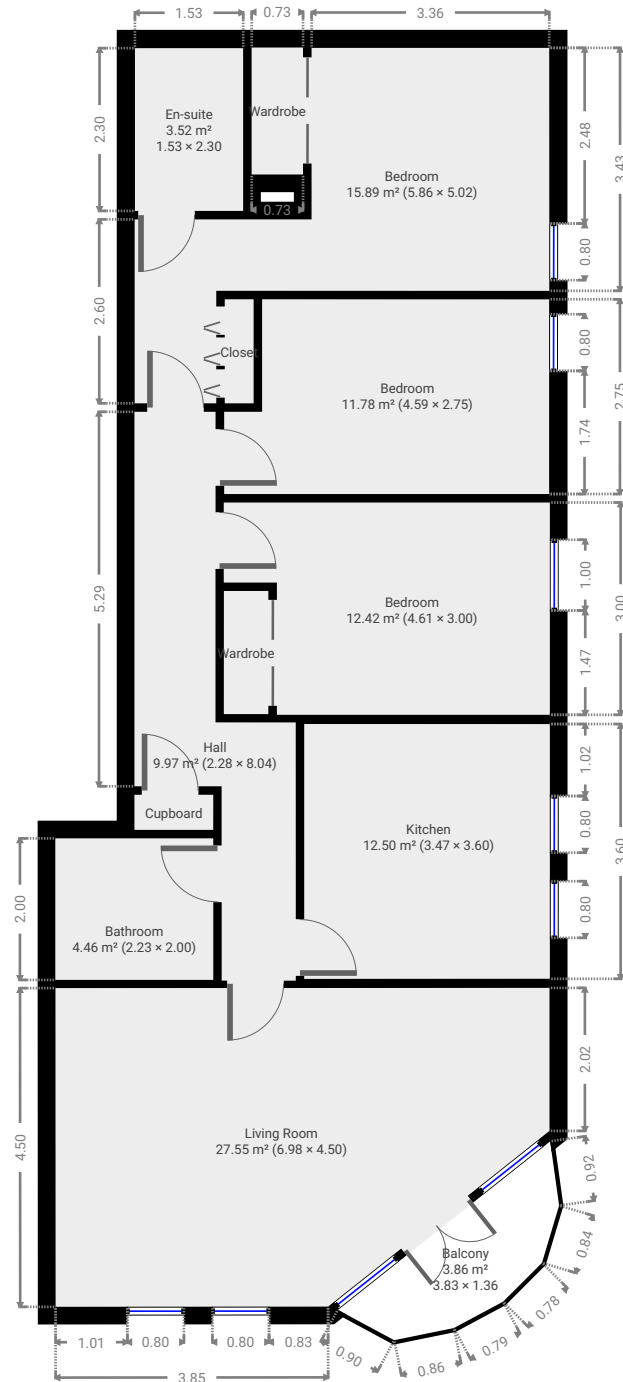
Total area: 101.57 m²

Living area: 101.57 m²

Floors: 1

Rooms: 5

▼ Ground Floor TOTAL AREA: 101.57 m² · LIVING AREA: 101.57 m² · ROOMS: 5



THIS FLOORPLAN IS PROVIDED WITHOUT WARRANTY OF ANY KIND. SENSOPIA DISCLAIMS ANY WARRANTY INCLUDING, WITHOUT LIMITATION, SATISFACTORY QUALITY OR ACCURACY OF DIMENSIONS.

