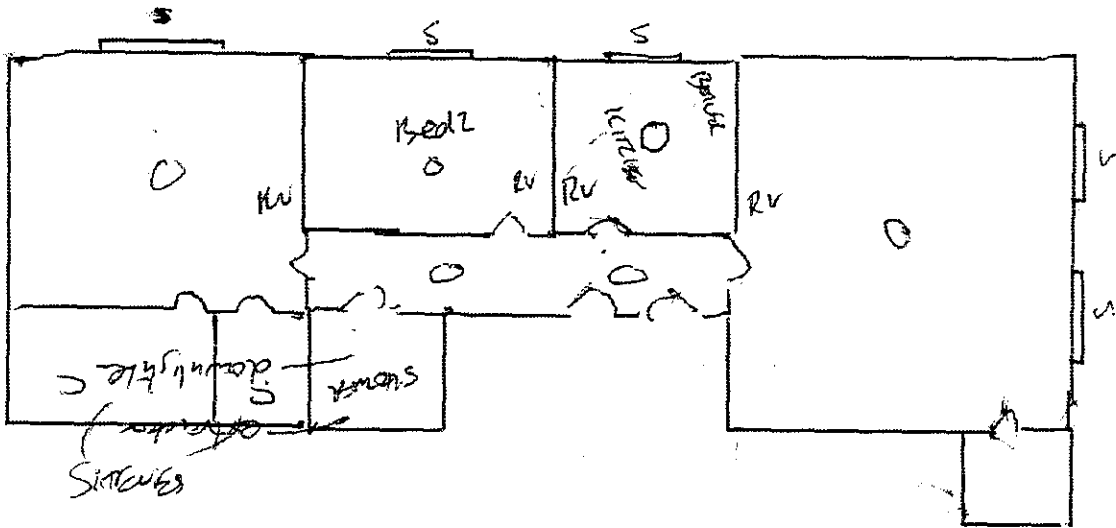


Stopcock lead / copper and
 Gas meter - toilet
 Filler meter - bath



FICR - M. SMOKE - FUSE BOARD DATED
 REPLACE PENDANTS + LAMP SHADS (HARDEN IN KITCHEN?)

SHOWER ROOM - CORNICE

BED 1 - windows OK but needs mastic/petty / ext decor
 STOPCOCK in copper and
 immersi- heater design - tank above
 mould - clean, seal + paint
 clean carpet

BED 2 - windows - same as bed 1 + CRACKED PLANE
 WALLS PAINTED

KITCHEN WINDOW DITTO
 FRIDGE unanchored & off too long - replace
 GAS COOKER
 seal with top WM.

LIVING ROOM OK fill + paint out copper and
 1 window replaced SILENT