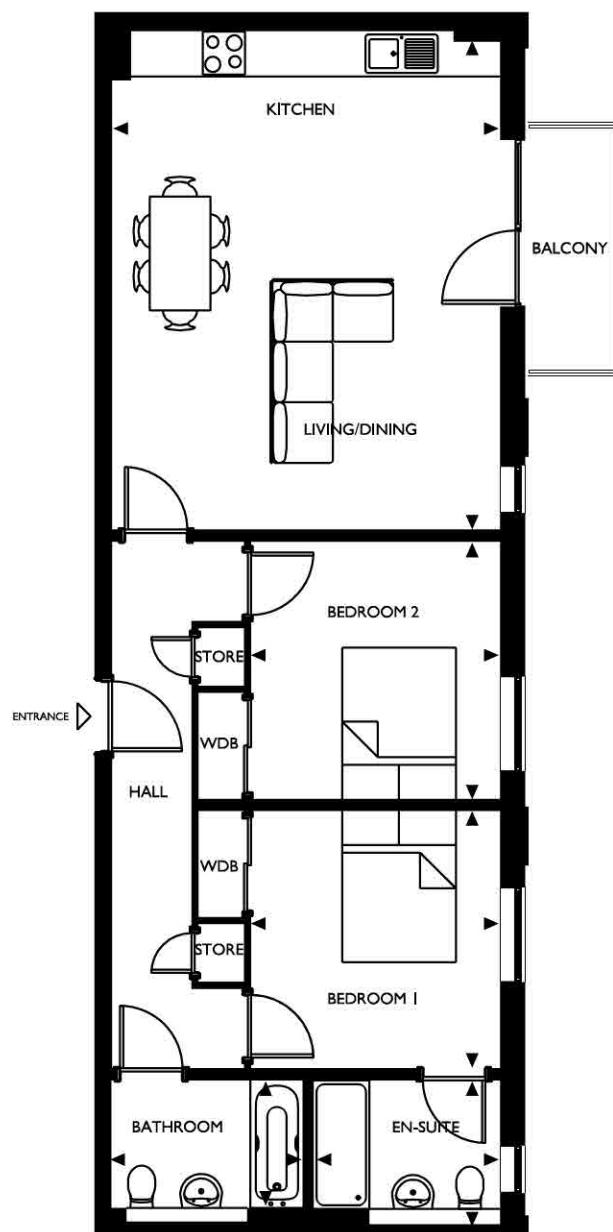
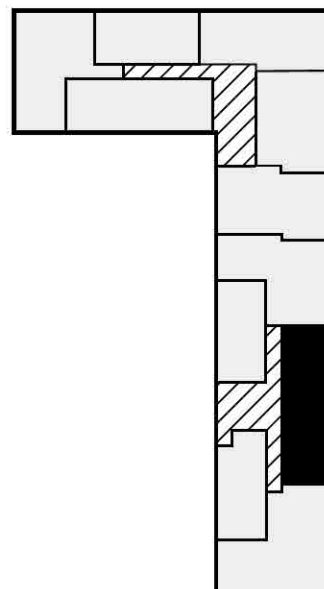


Block D / Type 16 / Stair 3 / 2 Bedroom apartment**Plot: 59, 64, 69, 74, 79****Floor: First, second, third, fourth, fifth**

Room	Metric	Imperial
Living/Dining/Kitchen	6585 X 5135	21'6" X 16'8"
Bedroom 1	3400 X 3295	11'2" X 10'8"
Bedroom 2	3400 X 3295	11'2" X 10'8"
Bathroom	2540 X 1870	8'3" X 6'1"
Ensuite	2475 X 1900	8'1" X 6'2"
Total area	81.6m²	878 ft²
Balcony	1145 X 3190	3'8" X 10'5"



All plans may be subject to change and consequently do not form part of any contract. Floor layouts are indicative only. All dimensions both metric and imperial are taken from points as indicated on the floorplans and are for guidance only. Please check with Selling Agent for current plot specific details before reserving. Floor and kitchen layouts are indicative only.