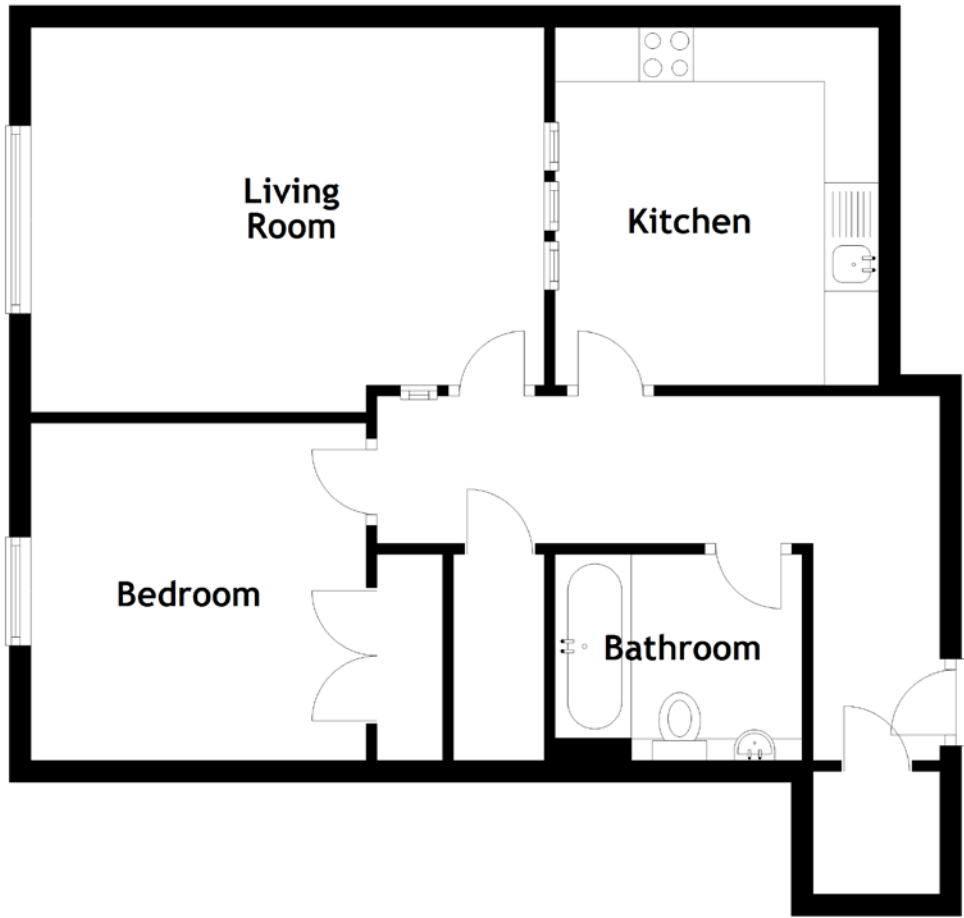


# FLOOR PLAN, DIMENSIONS & MAP



Approximate Dimensions  
(Taken from the widest point)

Living Room  
Kitchen

4.73m (15'6") x 3.43m (11'3")  
3.30m (10'10") x 2.98m (9'9")

Bathroom  
Bedroom

2.27m (7'6") x 1.90m (6'3")  
3.11m (10'2") x 3.09m (10'2")

Gross internal floor area (m<sup>2</sup>): 55m<sup>2</sup>  
EPC Rating: C

