

## WARRANT NOTES

**PART B.**  
ALL MATERIALS TO BE IN ACCORDANCE WITH THE RELEVANT BRITISH STANDARDS.

**PART C.**  
DRAINAGE - NO JOISTS TO BE CUT OR NOTCHED

**PART E.**  
SMOKE DETECTORS FITTED IN ACCORDANCE WITH BS:5446:PART1:1990. MAINS OPERATED SMOKE DETECTOR WITH 72 HOUR STANDBY SUPPLY AND AUDIBLE WARNING THAT MAINS SUPPLY IS OFF WITH CAPACITY FOR WARNING OF SMOKE FOR A FURTHER 4 MINUTES. AUDIBLE WARNING TO BE GIVEN EVERY MINUTE WHEN STANDBY SUPPLY FALLS BELOW THAT REQUIRED TO SATISFY NECESSARY DURATION. ALARM TO BE CEILING MOUNTED, AT LEAST 300mm FROM ANY WALL OR LIGHT FITTING AND LOCATED NOT MORE THAN 7m FROM DOOR TO LIVING ROOM OR KITCHEN AND NOT MORE THAN 3m FROM DOOR TO A ROOM INTENDED TO BE USED AS SLEEPING ACCOMMODATION. TO BE MEASURED HORIZONTALLY.

**PART K.**  
KITCHEN EXTRACT TO BE CAPABLE OF 60 LITRES PER SECOND - EXTRACT CONCEALED WITHIN HIGH LEVEL BOXING.

**PART M.**  
NEW DRAINAGE PIPEWORK TO BE PVC IN ACC/ WITH BS 5572:1994-1-10 CONNECTED TO EXISTING VENTILATED SYSTEM.

ALL PIPEWORK TO BE SUPPORTED IN ACC/ WITH MANUFACTURER'S RECOMMENDATIONS. ALL DRAINAGE TO BE ADEQUATELY STRENGTHENED AND SUPPORTED OVER ITS ENTIRE LENGTH. ACCESS TO BE PROVIDED AT TRAPS AND CHANGES IN DIRECTION.

TRAPS TO BE 75mm DEEP SEAL. EXTERNAL PIPEWORK CONNECTING INTO EXISTING CAST IRON SVP TO BE CAST IRON.

**PART N.**  
ELECTRICAL INSTALLATION TO COMPLY WITH RELEVANT REQUIREMENTS OF BS 7671:1992.

**PART Q.**  
ACTIVITY SPACE 1000x600 IN FRONT OF COOKER. KITCHEN UNITS TO PROVIDE 1 CUBIC METRE OF STORAGE.

WE CERTIFY THAT THIS IS A TRUE COPY OF ONE OF THE DRAWINGS REFERRED TO IN THE BUILDING WARRANT APPLICATION

DATED 13/2/07  
SIGNED [Signature]

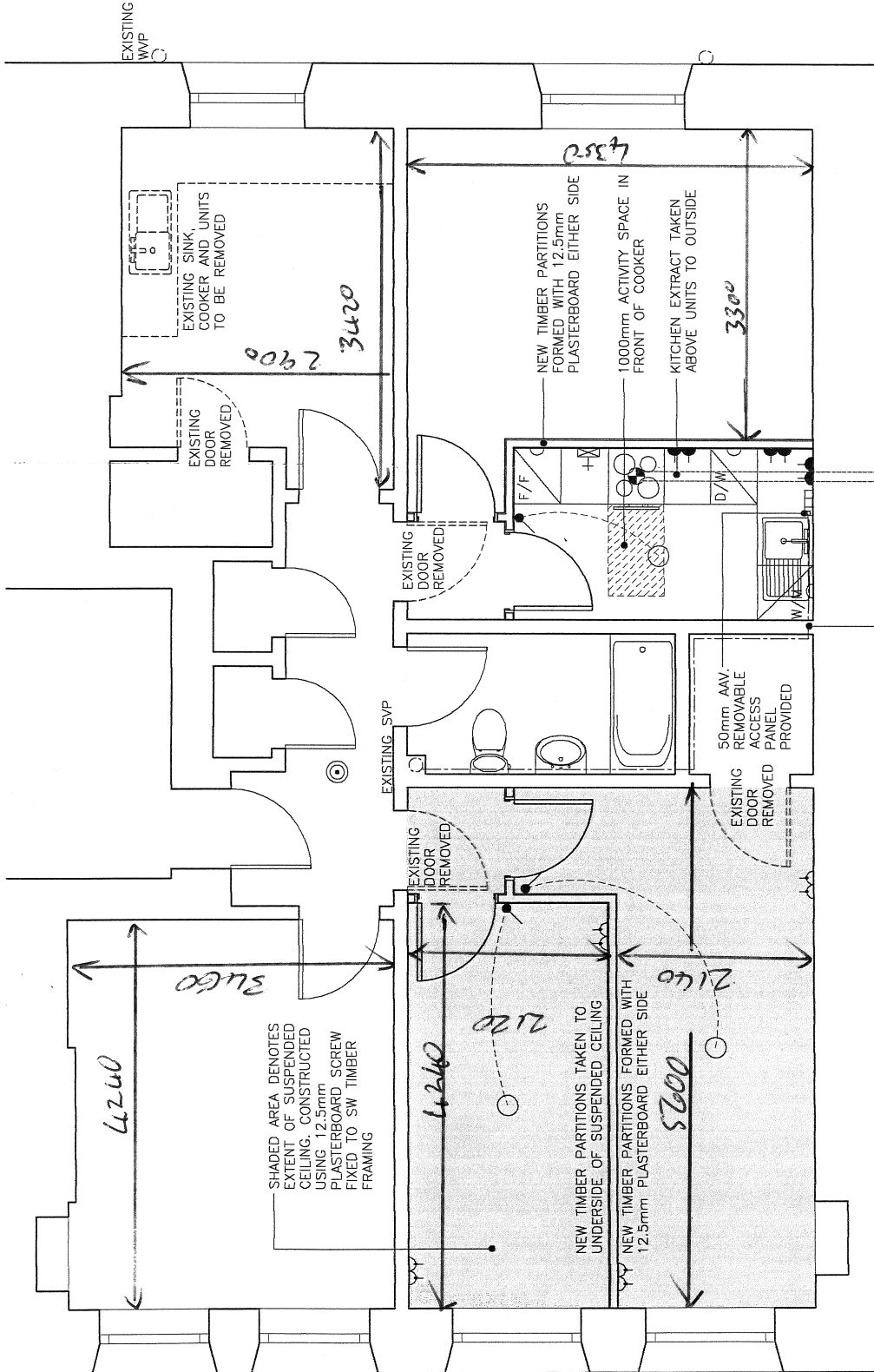
FOR EMA ARCHITECTURE + DESIGN

**ema**  
ARCHITECTURE + DESIGN

GRANT DEVELOPMENT LTD  
FLAT ALTERATIONS  
191 LEITH WALK (1/F.), EDINBURGH

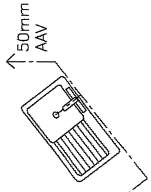
PROPOSED PLAN  
BUILDING WARRANT DRAWING

DATE	13/2/07	PROJECT NO.	04060_11(00)001
DRAWN BY	AB/SJ/CMV/N	CHECKED BY	AB/SJ/CMV/N
SCALE	1:10	DATE	
REVISIONS		APPROVED BY	
REVISION		DATE	
CHARTERED ARCHITECTS The Studio, 301 Belford Road, Edinburgh, EH11 1NA T: 011 49 49 49 F: 011 49 85 96 E: info@ema-architects.co.uk			



DRAINAGE FROM KITCHEN SINK TAKEN ALONG WALL WITHIN PIPE BOXING AND CONNECTED INTO EXISTING INTERNAL SVP.

EXISTING WVP



DRAINAGE ISOMETRIC

## ELECTRICAL LEGEND

	PENDANT LIGHT AND SWITCH
	NOTE: BATHROOM LIGHT TO BE SHROUDED
	LIGHT/ FAN CONTROL SWITCH
	DOUBLE SWITCHED SOCKET OUTLET
	DOUBLE SWITCHED SOCKET OUTLET ABOVE WORKTOP
	APPLIANCE CONTROL PANEL (ACP)
	SOCKET OUTLET
	COOKER CONTROL WITH LOW-LEVEL HOB IGNITION POINT
	EXTRACTOR FAN WALL MOUNTED TO KITCHEN
	SMOKE DETECTOR