

### WARRANT NOTES

ALL MATERIALS TO BE IN ACCORDANCE WITH THE RELEVANT BRITISH STANDARDS.

**PART B:**

**DRAINAGE** - NO JOISTS TO BE CUT OR NOTICED TO ACCOMMODATE THE PROPOSED DRAINAGE.

**STRUCTURAL** - NO NEW STAIRS TO FORM BEDROOM.

**FINISHES** - FINISHES TO BE IN ACCORDANCE WITH STRUCTURAL ENGINEER'S SPECIFICATION. NOTE IF SELLER IS RELIABLE.

**FIRE** - ALL NEW DOORS TO BE FIRE RATED TO 30 MIN.

**GLASS** - ALL NEW WINDOWS TO BE DOUBLE GLAZED.

**SMOKE** - ALL NEW DOORS TO BE FIRE RATED TO 30 MIN.

**SMOKE** - ALL NEW DOORS TO BE FIRE RATED TO 30 MIN.

**SMOKE** - ALL NEW DOORS TO BE FIRE RATED TO 30 MIN.

**SMOKE** - ALL NEW DOORS TO BE FIRE RATED TO 30 MIN.

**SMOKE** - ALL NEW DOORS TO BE FIRE RATED TO 30 MIN.

**SMOKE** - ALL NEW DOORS TO BE FIRE RATED TO 30 MIN.

**SMOKE** - ALL NEW DOORS TO BE FIRE RATED TO 30 MIN.

**SMOKE** - ALL NEW DOORS TO BE FIRE RATED TO 30 MIN.

**SMOKE** - ALL NEW DOORS TO BE FIRE RATED TO 30 MIN.

**SMOKE** - ALL NEW DOORS TO BE FIRE RATED TO 30 MIN.

**SMOKE** - ALL NEW DOORS TO BE FIRE RATED TO 30 MIN.

**SMOKE** - ALL NEW DOORS TO BE FIRE RATED TO 30 MIN.

**SMOKE** - ALL NEW DOORS TO BE FIRE RATED TO 30 MIN.

**SMOKE** - ALL NEW DOORS TO BE FIRE RATED TO 30 MIN.

**SMOKE** - ALL NEW DOORS TO BE FIRE RATED TO 30 MIN.

**SMOKE** - ALL NEW DOORS TO BE FIRE RATED TO 30 MIN.

**SMOKE** - ALL NEW DOORS TO BE FIRE RATED TO 30 MIN.

**SMOKE** - ALL NEW DOORS TO BE FIRE RATED TO 30 MIN.

**SMOKE** - ALL NEW DOORS TO BE FIRE RATED TO 30 MIN.

**SMOKE** - ALL NEW DOORS TO BE FIRE RATED TO 30 MIN.

**SMOKE** - ALL NEW DOORS TO BE FIRE RATED TO 30 MIN.

**SMOKE** - ALL NEW DOORS TO BE FIRE RATED TO 30 MIN.

**SMOKE** - ALL NEW DOORS TO BE FIRE RATED TO 30 MIN.

**SMOKE** - ALL NEW DOORS TO BE FIRE RATED TO 30 MIN.

**SMOKE** - ALL NEW DOORS TO BE FIRE RATED TO 30 MIN.

**SMOKE** - ALL NEW DOORS TO BE FIRE RATED TO 30 MIN.

**SMOKE** - ALL NEW DOORS TO BE FIRE RATED TO 30 MIN.

**SMOKE** - ALL NEW DOORS TO BE FIRE RATED TO 30 MIN.

**SMOKE** - ALL NEW DOORS TO BE FIRE RATED TO 30 MIN.

**SMOKE** - ALL NEW DOORS TO BE FIRE RATED TO 30 MIN.

**SMOKE** - ALL NEW DOORS TO BE FIRE RATED TO 30 MIN.

**SMOKE** - ALL NEW DOORS TO BE FIRE RATED TO 30 MIN.

**SMOKE** - ALL NEW DOORS TO BE FIRE RATED TO 30 MIN.

**SMOKE** - ALL NEW DOORS TO BE FIRE RATED TO 30 MIN.

**SMOKE** - ALL NEW DOORS TO BE FIRE RATED TO 30 MIN.

**SMOKE** - ALL NEW DOORS TO BE FIRE RATED TO 30 MIN.

**SMOKE** - ALL NEW DOORS TO BE FIRE RATED TO 30 MIN.

**SMOKE** - ALL NEW DOORS TO BE FIRE RATED TO 30 MIN.

**SMOKE** - ALL NEW DOORS TO BE FIRE RATED TO 30 MIN.

**SMOKE** - ALL NEW DOORS TO BE FIRE RATED TO 30 MIN.

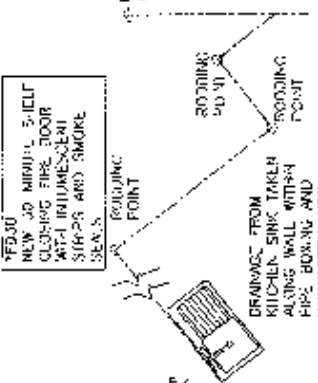
**SMOKE** - ALL NEW DOORS TO BE FIRE RATED TO 30 MIN.

**SMOKE** - ALL NEW DOORS TO BE FIRE RATED TO 30 MIN.

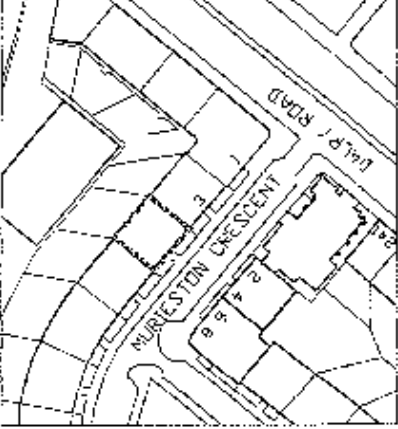
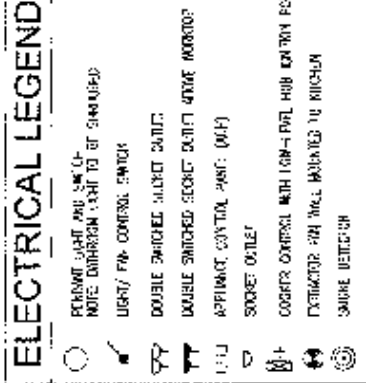
**SMOKE** - ALL NEW DOORS TO BE FIRE RATED TO 30 MIN.

**SMOKE** - ALL NEW DOORS TO BE FIRE RATED TO 30 MIN.

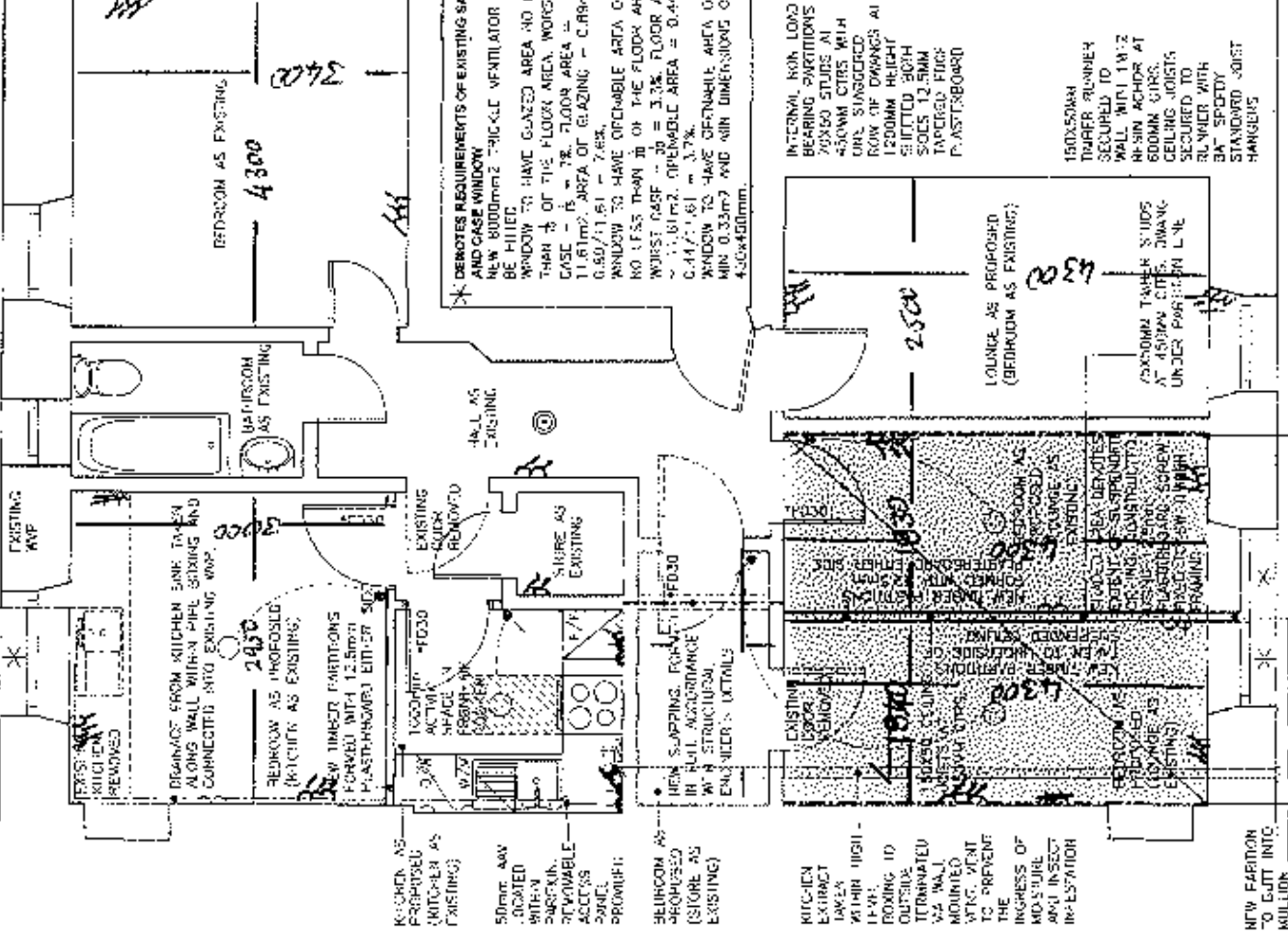
**SMOKE** - ALL NEW DOORS TO BE FIRE RATED TO 30 MIN.



### DRAINAGE ISOMETRIC



SITE LOCATION PLAN  
SCALE 1:1250



### ELECTRICAL LEGEND

- PERMITS PART AND SIZE OF WIRE
- NOTE DIMENSION FOR TO BE SHOWN
- W/P: WIRE CONNECTION
- DOUBLE SWITCH: DOUBLE SWITCH
- DOUBLE SWITCH: DOUBLE SWITCH
- APPROXIMATE: APPROXIMATE
- SOCKET: SOCKET
- COOPER: COOPER
- EXTENSIVE: EXTENSIVE
- SMOKE: SMOKE

NEW PARTITION TO GO INTO MULLION

ema ARCHITECTURE + DESIGN  
2025.05.05  
2025.05.05

ema ARCHITECTURE + DESIGN  
2025.05.05  
2025.05.05