

REFERENCE LEGEND

- NEW SLABING FORMED IN ACCORDANCE WITH THE FOLLOWING:
 - NEW INTERNAL NON-LOAD BEARING PARTITION, 100MM STUBS AT ROOM CENTRES WITH ONE SHEDDED BOTH SIDES 12.5MM THICKED EDGE
 - 100MM MIN WIDE BACKING TO BE CONTAINED WITHIN ALL EXISTING DOOR OPENINGS BLOCKED UP
 - EXISTING DOOR OPENINGS BLOCKED UP
 - 50mm AW MIN. CERTIFICATE
 - TO TERMINATE ABOVE FLOOD LEVEL OF HIGHEST VENTILATED BOILING
 - TO BE CONTAINED WITHIN ACCESSIBLE AND
 - NEW 30 MINUTE SELF CLOSING FIRE DOOR WITH FIRE RESISTANT STRIPS, SMOKE SEALS AND 300. HINGES
 - REMOVES REQUIREMENTS OF EXISTING SASH AND CASE WINDOWS
- EXISTING CEILING
 - 250mm CONTINUOUS
 - SPRINT TO BE REMOVED
 - CEILING, NOT-ADJACENT BOARD
 - SOITS STAGED BY MIN
 - 100mm MIN WIDE BACKING
 - 100mm MIN WIDE BACKING
 - STEELWORK TO STRUCTURAL ENGINEER'S DESIGN
 - STOP MINIMUM 100mm
 - WIDE AT JOINTS
 - MANUFACTURER'S RECOMMENDATIONS
- NEW 30 MINUTE SELF CLOSING FIRE DOOR WITH FIRE RESISTANT STRIPS, SMOKE SEALS AND 300. HINGES
- REMOVES REQUIREMENTS OF EXISTING SASH AND CASE WINDOWS

NEW PARTITION DETAIL 1:10

SMOKE DETECTORS TO BE FITTED TO THE CEILING IN ACCORDANCE WITH THE MANUFACTURER'S RECOMMENDATIONS. ALL JOINTS TO BE TYPED/FILLED WITH SMOKE SEALANT APPLIED TO ACHIEVE THE FIRE PROTECTION.

NEW PARTITION DETAIL 1:10

SINGLE LAYER OF GYPSUM BOARD OF MINIMUM MASS PER UNIT AREA TO BE FITTED TO THE CEILING IN ACCORDANCE WITH THE MANUFACTURER'S RECOMMENDATIONS. ALL JOINTS TO BE TYPED/FILLED WITH SMOKE SEALANT APPLIED TO ACHIEVE THE FIRE PROTECTION.

ELECTRICAL LEGEND

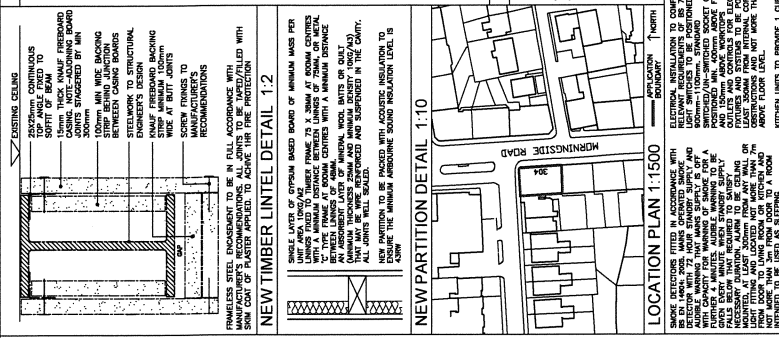
- NEW WIRING TO BE SHROUDED
- 100V/16A CONTROL SWITCH
- DOUBLE SWITCHED SOCKET OUTLET
- MULTI-OUTLET APPLIANCE SWITCH
- SOCKET OUTLET
- SOCKET CONTROL WITH ON-OFF USE, 10A DEDICATED POINT
- SMOKE DETECTOR
- NEW DETECTOR

LOCATION PLAN 1:1500

SMOKE DETECTORS TO BE FITTED TO THE CEILING IN ACCORDANCE WITH THE MANUFACTURER'S RECOMMENDATIONS. ALL JOINTS TO BE TYPED/FILLED WITH SMOKE SEALANT APPLIED TO ACHIEVE THE FIRE PROTECTION.

NEW PARTITION DETAIL 1:10

SINGLE LAYER OF GYPSUM BOARD OF MINIMUM MASS PER UNIT AREA TO BE FITTED TO THE CEILING IN ACCORDANCE WITH THE MANUFACTURER'S RECOMMENDATIONS. ALL JOINTS TO BE TYPED/FILLED WITH SMOKE SEALANT APPLIED TO ACHIEVE THE FIRE PROTECTION.



NEW PARTITION DETAIL 1:10

SMOKE DETECTORS TO BE FITTED TO THE CEILING IN ACCORDANCE WITH THE MANUFACTURER'S RECOMMENDATIONS. ALL JOINTS TO BE TYPED/FILLED WITH SMOKE SEALANT APPLIED TO ACHIEVE THE FIRE PROTECTION.

NEW PARTITION DETAIL 1:10

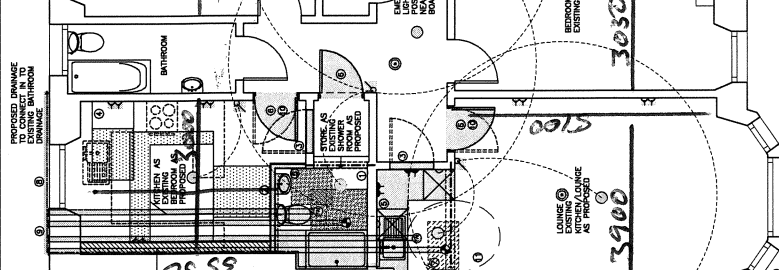
SINGLE LAYER OF GYPSUM BOARD OF MINIMUM MASS PER UNIT AREA TO BE FITTED TO THE CEILING IN ACCORDANCE WITH THE MANUFACTURER'S RECOMMENDATIONS. ALL JOINTS TO BE TYPED/FILLED WITH SMOKE SEALANT APPLIED TO ACHIEVE THE FIRE PROTECTION.

SMOKE AND HEAT EXTRACT SYSTEM

SMOKE AND HEAT EXTRACT SYSTEM TO BE INSTALLED IN ACCORDANCE WITH THE MANUFACTURER'S RECOMMENDATIONS. ALL JOINTS TO BE TYPED/FILLED WITH SMOKE SEALANT APPLIED TO ACHIEVE THE FIRE PROTECTION.

NEW PARTITION DETAIL 1:10

SINGLE LAYER OF GYPSUM BOARD OF MINIMUM MASS PER UNIT AREA TO BE FITTED TO THE CEILING IN ACCORDANCE WITH THE MANUFACTURER'S RECOMMENDATIONS. ALL JOINTS TO BE TYPED/FILLED WITH SMOKE SEALANT APPLIED TO ACHIEVE THE FIRE PROTECTION.



304 (3F1) MORNINGSIDE ROAD

1:50

DRAINAGE ISOMETRIC

1:100

REFERENCE LEGEND

- NEW SLABING FORMED IN ACCORDANCE WITH THE FOLLOWING:
 - NEW INTERNAL NON-LOAD BEARING PARTITION, 100MM STUBS AT ROOM CENTRES WITH ONE SHEDDED BOTH SIDES 12.5MM THICKED EDGE
 - 100MM MIN WIDE BACKING TO BE CONTAINED WITHIN ALL EXISTING DOOR OPENINGS BLOCKED UP
 - EXISTING DOOR OPENINGS BLOCKED UP
 - 50mm AW MIN. CERTIFICATE
 - TO TERMINATE ABOVE FLOOD LEVEL OF HIGHEST VENTILATED BOILING
 - TO BE CONTAINED WITHIN ACCESSIBLE AND
 - NEW 30 MINUTE SELF CLOSING FIRE DOOR WITH FIRE RESISTANT STRIPS, SMOKE SEALS AND 300. HINGES
 - REMOVES REQUIREMENTS OF EXISTING SASH AND CASE WINDOWS
- EXISTING CEILING
 - 250mm CONTINUOUS
 - SPRINT TO BE REMOVED
 - CEILING, NOT-ADJACENT BOARD
 - SOITS STAGED BY MIN
 - 100mm MIN WIDE BACKING
 - 100mm MIN WIDE BACKING
 - STEELWORK TO STRUCTURAL ENGINEER'S DESIGN
 - STOP MINIMUM 100mm
 - WIDE AT JOINTS
 - MANUFACTURER'S RECOMMENDATIONS
- NEW 30 MINUTE SELF CLOSING FIRE DOOR WITH FIRE RESISTANT STRIPS, SMOKE SEALS AND 300. HINGES
- REMOVES REQUIREMENTS OF EXISTING SASH AND CASE WINDOWS

NEW PARTITION DETAIL 1:10

SMOKE DETECTORS TO BE FITTED TO THE CEILING IN ACCORDANCE WITH THE MANUFACTURER'S RECOMMENDATIONS. ALL JOINTS TO BE TYPED/FILLED WITH SMOKE SEALANT APPLIED TO ACHIEVE THE FIRE PROTECTION.

NEW PARTITION DETAIL 1:10

SINGLE LAYER OF GYPSUM BOARD OF MINIMUM MASS PER UNIT AREA TO BE FITTED TO THE CEILING IN ACCORDANCE WITH THE MANUFACTURER'S RECOMMENDATIONS. ALL JOINTS TO BE TYPED/FILLED WITH SMOKE SEALANT APPLIED TO ACHIEVE THE FIRE PROTECTION.

ELECTRICAL LEGEND

- NEW WIRING TO BE SHROUDED
- 100V/16A CONTROL SWITCH
- DOUBLE SWITCHED SOCKET OUTLET
- MULTI-OUTLET APPLIANCE SWITCH
- SOCKET OUTLET
- SOCKET CONTROL WITH ON-OFF USE, 10A DEDICATED POINT
- SMOKE DETECTOR
- NEW DETECTOR

LOCATION PLAN 1:1500

SMOKE DETECTORS TO BE FITTED TO THE CEILING IN ACCORDANCE WITH THE MANUFACTURER'S RECOMMENDATIONS. ALL JOINTS TO BE TYPED/FILLED WITH SMOKE SEALANT APPLIED TO ACHIEVE THE FIRE PROTECTION.

NEW PARTITION DETAIL 1:10

SINGLE LAYER OF GYPSUM BOARD OF MINIMUM MASS PER UNIT AREA TO BE FITTED TO THE CEILING IN ACCORDANCE WITH THE MANUFACTURER'S RECOMMENDATIONS. ALL JOINTS TO BE TYPED/FILLED WITH SMOKE SEALANT APPLIED TO ACHIEVE THE FIRE PROTECTION.

SMOKE AND HEAT EXTRACT SYSTEM

SMOKE AND HEAT EXTRACT SYSTEM TO BE INSTALLED IN ACCORDANCE WITH THE MANUFACTURER'S RECOMMENDATIONS. ALL JOINTS TO BE TYPED/FILLED WITH SMOKE SEALANT APPLIED TO ACHIEVE THE FIRE PROTECTION.

NEW PARTITION DETAIL 1:10

SINGLE LAYER OF GYPSUM BOARD OF MINIMUM MASS PER UNIT AREA TO BE FITTED TO THE CEILING IN ACCORDANCE WITH THE MANUFACTURER'S RECOMMENDATIONS. ALL JOINTS TO BE TYPED/FILLED WITH SMOKE SEALANT APPLIED TO ACHIEVE THE FIRE PROTECTION.

304 (3F1) MORNINGSIDE ROAD

1:50

DRAINAGE ISOMETRIC

1:100

ema
ARCHITECTURE + DESIGN

GRANT MANAGEMENT
FLAT ALTERATIONS
304 (3F1) MORNINGSIDE ROAD

PROPOSED PLAN
BUILDING WARRANT DRAWING

DATE: 20th JULY 2014
DRAWN BY: J. B. B. B. B.
CHECKED BY: J. B. B. B. B.
SCALE: 1:100

WARRANT NO: 04080_551(00)001

CHARTERED ARCHITECTS
The Studio, 2nd Floor, 100
The Quadrant, 100
T: 0131 450 8000
E: info@ema-architects.co.uk